



In this issue:

- p1 President's Message
- p2 Upcoming Events
- p3 Membership Corner
- p4 Certification News
- p5 Event Highlights
- p6 Website Links

CSI's Core Values

- ✓ Foster innovation and creative thinking.
- ✓ Honor and embrace our diversity.
- ✓ Encourage personal and professional growth.
- ✓ Make knowledge-based decisions.
- ✓ Strive for cooperative solutions.
- ✓ Promote stewardship of the environment.
- ✓ Promote and recognize individual and team excellence.
- ✓ Celebrate camaraderie.
- ✓ Keep promises, and trust others will do the same.
- ✓ Value the needs of those we serve.



President's Message

*"Those who wish to secure the good of others,
have already secured their own"*

-Confucius



CSI ACQUIRES BUILDING SYSTEMS DESIGN (BSD)

Some of you may have heard that earlier this month CSI announced the acquisition of Building Systems Design, Inc, a broad-based corporation specializing in software tools for the architecture, engineering and construction markets of North America. BSD is a software company and leading developer of commercial master specifications and construction cost estimating tools. Their motivation is to develop and maintain several of CSI format documents including MasterFormat, UniFormat and OmniClass, all of which relate to specifications and cost estimating.

When I first learned of CSI's interest in acquiring BSD, it brought to mind the financial and organizational challenges that each organization will be faced with. Oversight of operations, conflict of interest with BSD competitors and whether the acquisition is the right direction at a time of economic uncertainty made me question CSI's long range vision and responsibility in making wise financial choices.

In search of answers, I read several articles and blogs from CSI leaders and members from around the country and came to the conclusion that this acquisition is in fact consistent with CSI's strategic plan in securing partnerships to help strengthen our organization. CSI's current strategic plan focuses on increasing our ability to develop practice tools and make them available to our members. BSD is a leader in the development of master specifications and interoperability software that connects its specifications product with other software such as Autodesk's industry leading Revit.

As the industry continues to increase its adoption and use of Building Information Management (BIM) software tools, CSI will find it easier to assist our members in meeting these requirements so that they will be leaders in providing value to their firms and clients. CSI members will directly benefit by increased access to BSD's master specifications software and tools through special discounts on products and services.

I would encourage all of you to support this new relationship with BSD. CSI will actively encourage members to consider using their software and products in a way that best serves their specific needs. Only you as individuals can determine what tools are most appropriate and cost effective for your business. As a result, CSI will continue its efforts in establishing strategic alliances and member benefits that are currently in place with multiple organizations and those that will best serve its mission of partnership and engagement.

Doug Heyamoto, CSI, AIA
CSI Spokane Chapter President

CSI Spokane Holiday Party & Gonzaga Ticket Give-Away

Come to **CSI's Holiday Social** and enter for your chance to win 2 tickets to the **Gonzaga vs. Lewis-Clark State** game that night at 6pm! Come prepared to leave for the game if your ticket is drawn!

Date: December 16

Time: 4:30 – 5:30

Cost: \$10 per person (Checks or cash only)

**Location: Burgundy's Restaurant - Spokane Club
1002 West Riverside**

You get your name in the raffle any number of times by:

- 1) being a CSI member (Get 10 raffle tickets!)
- 2) inviting a non-member (Get 10 more raffle tickets!)
- 3) being a potential new member (Get 10 raffle tickets!)
- 4) purchase additional tickets* (\$1 each)

For more info contact programs@csispokane.org



* Money from each additional raffle ticket purchased will go directly to Habitat for Humanity. Checks can be written directly to Habitat and is fully tax deductible. Donations can be made online at the party.

You must to be present to win!

Bring your game companion and be ready to head to the game if your raffle ticket is drawn.

KILGORE
tec products

www.kilgoretecproducts.com



PACIFIC MAT
& COMMERCIAL FLOORING

Specialists in Commercial Flooring, Entryway Systems and Mats.

Georgia Spencer, CDT

509.521.0753 · georgias@pacmat.com
Customer Service: 1.800.345.6287, ext. 2

Benjamin Moore®
The Leader in Paint & Color™

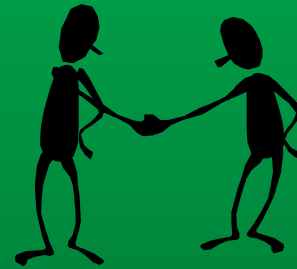

**Benjamin
Moore®**
Paints

Membership Corner

CSI Member Referral Program:

CSI has a new membership recruitment campaign under way, entitled "Every 1 Counts" – it's a pretty simple plan!

- ✓ Make 1 phone call
- ✓ Send 1 email
- ✓ Have 1 conversation



Click this link for more information: [Every-1-Counts](#)

NAC | ARCHITECTURE
www.nacarchitecture.com

Answer key
for CDT Quiz:
1-C, 2-C, 3-D



**Spokane
Regional
Plan Center**

209 N. Havana • PO Box 2968
Spokane, WA 99220
P 509.328.9600
F 509.328.7279

Doug Pennell
Industry Relations
doug@plancenter.net

www.plancenter.net



TRC
technical
resources
consultants

www.trc-consultants.com

Mark your calendars! Registration is now open for the spring CDT and advanced certification exams (CCCA, CCS, CCPR) **March 28 – April 9, 2011**. The early exam registration deadline is **January 28, 2011** and the final exam registration deadline is **February 25, 2011**.

CLICK HERE FOR INFO & REGISTRATION

Thinking about taking the CDT? CSI offers resources to help you prepare for the exam:

1. Free CDT Study Guide! [Download](#) a free study guide to help you prepare! This guide will help you focus on key areas of CSI's Project Resource Manual (PRM), the primary resource for the CDT exam.

2. Online CDT Prep Course [Click here for info](#) The CDT Prep Course lays the groundwork for understanding the development of facilities through construction documentation.

- Learn at your own pace in 11 on-demand sessions
- Live, webinar-based study sessions complement education sessions
- Earn AIA LUs and CSI CEN CEUs

3. Local Study Group Starts in January 2011 – location to be announced.

Test your knowledge with these sample questions from the CDT exam: (Answers on page 3)

Drawings prepared by the contractor, subcontractor, or material/equipment supplier that show how a particular aspect of the work is to be fabricated and installed, are called:

- a. Record drawings
- b. Construction Documents
- c. Shop Drawings
- d. Details

Product equivalency, effect on the other aspects of the project, and warranty are the major factors to be considered for:

- a. Alternates
- b. Shop drawing submittals
- c. Substitution requests
- d. Change order request

The Design Stage includes all of the following EXCEPT:

- a. Review of owner's program, schedule and budget
- b. Design Development
- c. Schematic Design
- d. Project Conception



The NW

Region CSI Conference,

held in the beautiful town of West Yellowstone, MT provided many great opportunities to meet and greet as well as network face to face with other CSI members from across the region and from across the country. Georgia Spencer and Faith Kidder went to represent Spokane and to participate in regional CSI seminars, business meetings and special events such as the Western BBQ and the bus tour of Yellowstone. This secluded spot created a more focused atmosphere for professionals to exchange ideas and provided a relaxed business get away. The conference was an excellent event which encouraged attendees to develop a clearer vision of current construction industry practices and trends and showed the many benefits of CSI. If you missed this year's regional conference, be sure to mark your calendars for 2011!



2011 Region Conference - June 15-19, 2011
Hosted by the Willamette Valley Chapter

Call for education seminar topics:
Contact Steve Gunn, Construction Focus, Inc.
541-686-2031 or sgunn@constructionfocus.com.

Advertising Info

Promote your business
in the CSI Spokane
Newsletter!

CSI Members: \$10
Non-CSI Members: \$15

For more info,
send your email to:
editor@csispokane.org

Board & Committees**President**

Doug Heyamoto, CSI, AIA

Vice-President

Georgia Spencer, CSI, CDT

Treasurer

Matt Gunderson, CSI

Secretary

Doug Kasman, CSI

Director

Faith Kidder, CSI, CDT

Director

David Birdsall, CSI

Director

Dean Childs, CSI

Director

Don McKinney, CSI, CDT, CCS

Programs

Faith Kidder, CSI, CDT

Membership

Georgia Spencer, CSI, CDT

Certification

Jennifer Leui, CSI, CDT

Scholarship

Tom Gerard, PE, CSI, LEED AP

Publications

Doug Pennell, CSI

**Promote your business on
CSI Spokane's Website!**

CLICK HERE FOR RATES & INFO!

www.csispokane.org



**Missed out on last month's
CSI Spokane Newsletter?**

Click here for the archives!